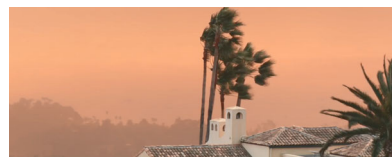
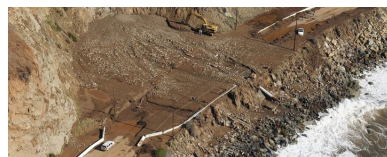


Ventura County

Multi-Jurisdictional Hazard Mitigation Plan

Update 2022

EXECUTIVE SUMMARY



June 2022



EXECUTIVE SUMMARY

Ventura County’s hazard mitigation plan update for 2022 defines measures to reduce risks from natural disasters in the Ventura County planning area, which includes unincorporated areas, incorporated cities, and special purpose districts. The plan updates the County’s previous plan, the *2015 Ventura County Multi-Hazard Mitigation Plan*. It complies with federal and state hazard mitigation planning requirements to establish eligibility for funding under Federal Emergency Management Agency (FEMA) grant programs for all jurisdictions that participated as planning partners:

- City of Camarillo
- City of Fillmore
- City of Moorpark
- City of Ojai
- City of Oxnard
- City of Port Hueneme
- City of San Buenaventura (Ventura)
- City of Santa Paula
- City of Simi Valley
- City of Thousand Oaks
- California State University, Channel Islands
- Calleguas Municipal Water District
- Casitas Municipal Water District
- Channel Islands Beach Community Services District
- Conejo Recreation & Park District
- Ojai Valley Sanitary District
- Pleasant Valley Recreation & Park District
- Saticoy Sanitary District
- Triunfo Water & Sanitation District
- United Water Conservation District
- Ventura County Fire Protection District
- Ventura County Office of Education
- Ventura County Public Works Agency—Watershed Protection
- Ventura Regional Sanitation District

PLAN DEVELOPMENT APPROACH

Organization

A core planning team consisting of a contract consultant and Ventura County staff was assembled to facilitate this plan update. A planning partnership was formed by engaging eligible local governments and making sure they understood their expectations for compliance under the updated plan. A steering committee was assembled to oversee the plan update, consisting of both governmental and non-governmental stakeholders within the planning area. Coordination with other local, state, and federal agencies involved in hazard mitigation occurred throughout the plan update process. Organization

efforts included a review of the County's 2015 hazard mitigation plan, the California statewide hazard mitigation plan, and existing programs that may support hazard mitigation actions.

Public Outreach

The planning team implemented a multi-media public involvement strategy utilizing the outreach capabilities of the planning partnership that was approved by the Steering Committee. The strategy included virtual public meetings, a community hazard mitigation awareness survey, a project website, and multiple print, web-based, and social media releases. Additionally, the Steering Committee was made up of community-based organizations, non-profit organizations, and other agencies that helped amplify public outreach efforts to their networks.

Plan Document Development

The planning team and Steering Committee assembled a document that is designed to meet federal hazard mitigation planning requirements for all partners. The updated plan contains two volumes. Volume 1 contains components that apply to all partners and the broader planning area. Volume 2 contains components that are jurisdiction-specific, including each planning partner's dedicated annex.

Adoption

Once pre-adoption approval has been granted by the California Governor's Office of Emergency Services and FEMA, each planning partner will individually adopt the updated plan. Each partner has up to one year from FEMA approval to adopt the plan.

RISK ASSESSMENT

Risk assessment is the process of measuring the potential loss of life resulting from natural hazards, as well as personal injury, economic injury, and property damage, in order to determine the vulnerability of people, buildings, and infrastructure. For this update, the risk assessment included the following:

- Hazard identification and profiling
- Assessment of the impact of hazards on physical, social, and economic assets
- Identification of particular areas of vulnerability
- Estimates of the cost of potential damage

Based on the risk assessment, each hazard of concern was ranked for the risk it poses to the overall planning area using risk ranking criteria provided by the core planning team. These rankings were reviewed and validated by each planning partner through the jurisdictional annex process. Figure ES-1 shows scores and ratings for the entire Ventura County planning area. All planning partners also rated the hazards for their impacts on their own individual planning areas. Figure ES-2 summarizes how the participating planning partners rated each hazard.

Figure ES-1. Countywide Hazard Risk Rating

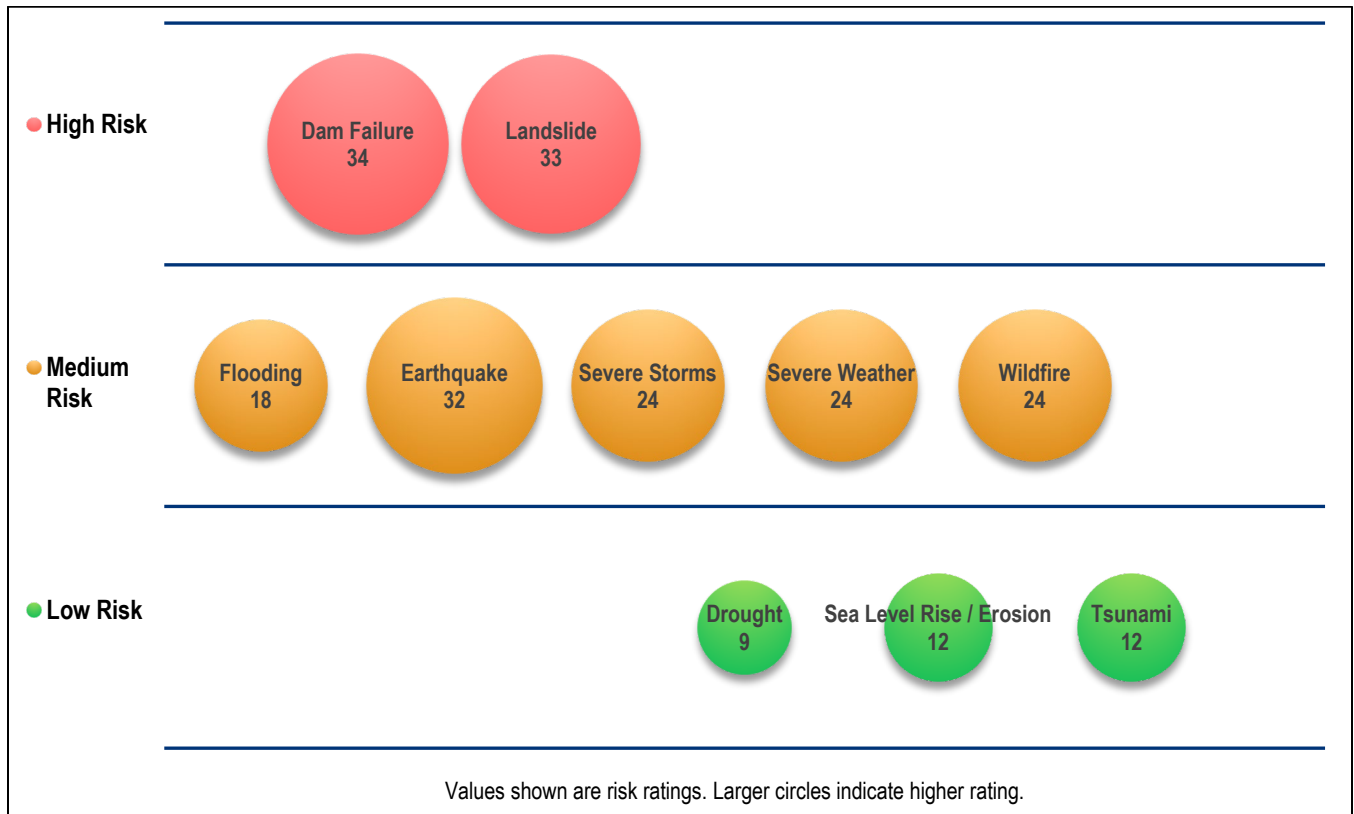
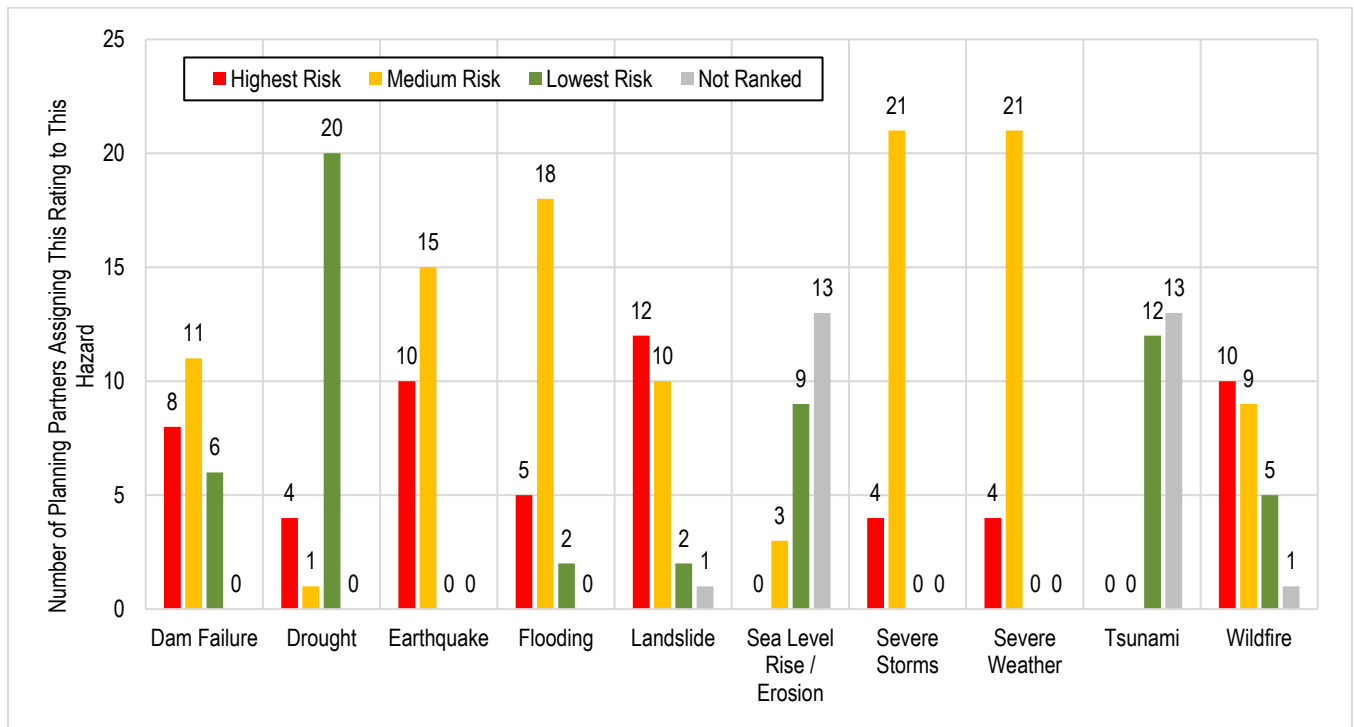


Figure ES-2. Summary of Risk Rating for Individual Planning Partners



The Steering Committee considered the full range of natural hazards that could affect the planning area and then selected those that present the greatest concern for risk assessment in this plan. The process incorporated a review of state and local hazard planning documents as well as information on the frequency of, magnitude of, and costs associated with hazards that have struck the planning area or could do so. Anecdotal information regarding natural hazards and the perceived vulnerability of the planning area's assets to them was also used. Based on the review, this plan includes risk assessments for the following hazards of concern:

- Dam failure
- Drought
- Earthquake
- Flood
- Landslide
- Sea-level rise and coastal erosion
- Severe storms
- Severe weather
- Tsunami
- Wildfire

In addition to the risk assessment of the hazards of concern, this plan provides a qualitative review of "hazards of interest." The Steering Committee determined that these other hazards, though not required to be evaluated under federal guidelines for hazard mitigation plans, are important to recognize qualitatively in this plan. Hazard profiles, without quantitative risk assessments, are provided for the following hazards of interest:

- Agricultural and biological hazards
- Pandemic

Climate change is not assessed as an individual hazard, but a profile is provided describing how climate change could affect the hazards of concern assessed in this plan.

MITIGATION GOALS AND OBJECTIVES

The Steering Committee reviewed the *2015 Ventura County Multi-Hazard Mitigation Plan* and noted that neither a vision statement nor a list of objectives was part of the previous plan. The following vision statement was selected to guide the Steering Committee and planning partners in selecting the actions contained in this plan update:

The Ventura County Multi-Jurisdictional Hazard Mitigation Plan will establish and promote a comprehensive mitigation strategy and efforts to equitably reduce risk and increase the resiliency of the community and environment from natural hazards.

Goals

The Steering Committee and planning team established the following 10 goals for the plan update:

- Protect life, property, and the environment, and minimize displacement due to natural hazard events.
- Effectively communicate natural hazard risks and mitigation strategies to the whole community.
- Pursue development and implementation of feasible, cost-effective, and environmentally sound hazard mitigation measures.
- Prioritize multi-objective hazard mitigation actions and those that reduce risk to vulnerable communities.
- Coordinate with other plans and programs that can support or enhance hazard mitigation.
- Enhance the County's capability and capacity to prepare for, respond to, and recover from the impacts of natural hazards.
- Proactively anticipate the risks of future impacts from hazards.
- Increase the County's adaptive capacity to reduce risk from hazard impacts.
- Promote proactive, self-sufficient mitigation and response abilities.
- Reduce risk to and increase the resilience of critical infrastructure and community lifelines.

The effectiveness of a mitigation strategy is assessed by determining how well these goals are achieved.

Objectives

Each of the selected plan objectives meets multiple goals, serving as a stand-alone measurement of the effectiveness of a mitigation action, rather than as a subset of a goal. The objectives were used to help establish priorities for each action identified in the plan. The plan objectives are as follows:

- Utilize the best available data, science, and technology to identify and communicate the risk exposure to hazards to state, regional, and local agencies, as well as the private sector and non-profit groups.
- Support efforts to improve the resilience of community lifelines in socially vulnerable communities.
- Enhance supply chain diversity and improved resilience by supporting local food and energy production and increased multi-modal transportation.
- Research, develop, promote, adopt, and enforce codes and standards to preserve life and property that are affordable and feasible to implement.
- Promote and implement measures to mitigate the risk of wildfires, such as greenbelts and fire breaks around communities and along roadways.
- Support the protection of vital records, and strengthen or replace buildings, infrastructure, and lifelines to minimize post-disaster disruption and facilitate short-term and long-term recovery.
- Improve and expand systems that provide warning and emergency communications to the whole community.

- Continue developing and strengthening inter-jurisdictional coordination and cooperation in the area of emergency services.
- Promote and implement the retrofit or replacement of at-risk structures and lifelines to increase community resilience.
- Incentivize mitigation measures for high-risk and repetitive loss areas to address repairs, major alterations, development plans, and practices to increase community resilience.
- Reduce repetitive property losses due to hazard impacts through acquisition, retrofitting, design, and updated construction and land use regulations.
- Encourage and support leadership within the private sector, non-profit agencies, and community-based organizations to promote and implement local hazard mitigation activities.
- Proactively manage and care for natural resources, including grasslands, forests, oak woodlands, riparian forests, stream channels, coastal wetlands, and beaches, to enhance their ability to withstand and recover from natural disasters and minimize public safety risks.
- Support hazard mitigation measures that promote and enhance natural processes.
- Support hazard mitigation measures, where feasible, that utilize nature-based practices and solutions (e.g., holistic watershed management and green belts) and support and enhance natural processes.
- Encourage the creation of financial and regulatory incentives to motivate stakeholders such as homeowners, private sector businesses, and non-profit community organizations to mitigate hazards and risks.
- Conduct public outreach activities that increase community awareness and understanding of hazard risk, mitigation options, and preparedness strategies.
- Minimize impacts of hazard events on the economic drivers for the County.
- Align the hazard mitigation plan with state mitigation plans; city and county general, community, capital improvement plans; special-purpose district plans; and climate action, resilience, and adaptation plans.

MITIGATION ACTION PLAN

The mitigation actions presented in this update are activities designed to reduce or eliminate losses resulting from natural hazards. The update process resulted in the identification of 300 mitigation actions for implementation by individual planning partners, as presented in Volume 2 of this plan. In addition, the Steering Committee and planning partners identified three countywide actions benefiting the whole partnership, as listed in Table ES-1.

Table ES-1. Countywide Mitigation Initiatives

Action Number and Description	Priority for Implementation	Priority for Grant Pursuit
CW-1— Continue to maintain a website that will house the multi-jurisdictional hazard mitigation plan and any amendments to it adopted during the next 5-year period to provide the planning partners and the public with ongoing access to the plan and its implementation.	High	Low
CW-2— Continue to leverage/support/enhance ongoing, regional public education and awareness programs, such as VCAAlert, CERT (Community Emergency Response Team), DART (Disaster Assistance Response Team), TsunamiReady, and StormReady, as methods to educate the public on risk, risk reduction, and community resilience.	High	Low
CW-3— Continue to provide a virtual hub for sharing information on hazard mitigation resources on the readyventuracounty.org website that will support mitigation efforts and awareness of grant funding opportunities to the planning partnership.	High	Low

IMPLEMENTATION

The Steering Committee developed a plan implementation and maintenance strategy that includes monitoring of the plan’s implementation, progress reporting, a strategy for continued public involvement, and plan integration with other relevant plans and programs.

Full implementation of the recommendations of this plan will require time and resources. The measure of the plan’s success will be its ability to adapt to changing conditions. Ventura County and its planning partners will assume responsibility for adopting the recommendations of this plan and committing resources toward implementation. The framework established by this plan will enable all planning partners to pursue Hazard Mitigation Assistance grant funding for feasible, eligible and cost-effective actions. The planning partnership developed this plan with extensive public input, and public support of the actions identified in this plan will help ensure the plan’s success.